

# Contemporary sanitary facilities

## Overview of solutions for public and commercial buildings







Plant 1 – Production with administration building and training centre



## Fittings and innovative solutions from the global leader

### Innovation and quality for more than 90 years

SCHELL has been synonymous with innovative fittings solutions for over nine decades. The company's mass production of angle valves started a success story that has seen over 780 million valves installed worldwide to date.

### From angle valves to full-range supplier

A broad product range soon developed from the standard angle valve. Today, SCHELL is a market leader in fittings for sanitary facilities on public and commercial premises, with durable, functional and multiple prize-winning products and solutions 'Made in Germany'.

### Focus on sustainability and efficiency

SCHELL products combine the best of design, technology and sustainability. These help to safeguard drinking water hygiene and save water – up to 70 % with contactless fittings and up to 40 % with angle valves.

### Digital solutions for efficient facility management

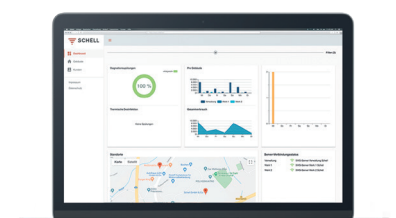
With the SWS/SMART.SWS Water Management System, SCHELL offers centralised, remote control for all fittings – to ensure the maintenance of drinking water hygiene and specified normal operation. The new E<sup>2</sup> faucet generation is now also setting the standards to follow.

### Innovation with responsibility

SCHELL stands for quality, innovation and sustainable solutions – for today and tomorrow.



Global leader for water management systems and angle valves



# Wash basin / Kitchen

- E<sup>2</sup> faucets Innovative time-of-flight (ToF) sensor for precise triggering without disruptions caused by mirror finishes or reflections, e.g. from hi-vis vests, plus selectable stagnation flushes (scheduled flushes, cyclic flushes or smart demand-based flushing that takes usage levels into account)
- ThermoProtect thermostat conforming to EN 1111, for temperature setting with degree precision. Anti-scalding protection provided even if cold water line fails.
- Up to 70% savings on water for contactless faucets, up to 55% savings for self-closing faucets
- Timeless and robust all-metal design for superior protection against vandalism and longevity
- Battery or mains operation (not WALIS-E, MODUS E Exposed wash basin tap), with simple battery replacement



Electronic wash basin tap  
**XERIS E<sup>2</sup>-T**

- With ThermoProtect thermostat
- Max. flow rate 5 l/min (pressure-independent)
- Thermal disinfection
- SWS-ready
- Direct app-based control



Electronic wash basin tap  
**CELIS E<sup>2</sup>**

- Suitable for small and medium-sized wash basins
- Low-pressure model also available
- Max. flow rate 5 l/min (pressure-independent)
- Thermal disinfection
- SWS-ready
- Direct app-based control



Electronic wash basin tap  
**PURIS E<sup>2</sup>**

- Award-winning linear design
- Max. flow rate 5 l/min (pressure-independent)
- Thermal disinfection
- SWS-ready
- Direct app-based control



Electronic wash basin tap  
**MODUS E**

- Compact version
- Adjustable hot water stop
- Max. flow rate 3,8 l/min (pressure-independent)



Electronic kitchen tap  
**GRANDIS E**

- For mixed water
- Swiveling outlet (lockable)
- Adjustable by means of short range reflex
- Triggering via infrared or single lever
- Max. flow rate 8.5 l/min (electronic actuation)
- Stagnation flush
- SWS-ready
- SSC (Bluetooth®)-ready



Self-closing wash basin tap  
**XERIS SC**

- For mixed water, pre-mixed water or cold water
- Easy flow time adjustment
- Temperature control in operating button
- Max. flow rate 5 l/min (pressure-independent)



Self-closing wash basin tap  
**PURIS SC**

- For mixed water, pre-mixed water or cold water
- Easy flow time adjustment
- Temperature control in operating button
- Max. flow rate 5 l/min (pressure-independent)



Self-closing wash basin tap  
**PETIT SC**

- For cold and pre-mixed water
- Adjustable flow time, factory-set to approx. 7 s
- Max. flow rate 5 l/min (pressure-independent)



Wash basin tap  
**MODUS Care AH/EH-T**  
**MODUS EH/EH-T**

- With clinic arm lever or loop lever (Care)
- With designer or loop lever (EH/EH-T)
- With ThermoProtect ceramic cartridge (EH-T)
- Basic cartridge with hot water limiting (AH/EH)



Electronic concealed wash basin tap  
**LINUS E**

- For mixed water, pre-mixed water or cold water
- Adjustable by means of short range reflex
- Mains or battery operation
- Max. flow rate 5 l/min (pressure-independent)
- Stagnation flush
- Thermal disinfection
- SWS-ready
- SSC (Bluetooth®)-ready



Electronic exposed wash basin tap  
**WALIS E**

- For cold and pre-mixed water
- Adjustable by means of short range reflex
- Battery operation
- Max. flow rate 5 l/min (pressure-independent)
- Stagnation flush
- Thermal disinfection
- SWS-ready
- SSC (Bluetooth®)-ready



Electronic exposed wash basin tap  
**VITUS VW-E-T**

- With ThermoProtect thermostat
- Available in different draw-off tap lengths
- Stagnation flush
- Thermal disinfection
- SWS-ready with VITUS bus extender
- SSC-ready with VITUS Bluetooth® module



Self-closing exposed wash basin tap  
**VITUS VW-C-T**

- With ThermoProtect thermostat
- Available in different draw-off tap lengths
- Stagnation flush
- Thermal disinfection
- SWS-ready with VITUS bus extender
- SSC-ready with VITUS Bluetooth® module



Electronic exposed wash basin tap  
**MODUS E**

- For cold or pre-mixed water
- Available with 187 and 230 mm reach
- Stagnation flush
- Max. flow rate 3,8 l/min (pressure-independent)



Self-closing exposed wash basin tap  
**PETIT SC**

- For cold or pre-mixed water
- Variable draw-off outlet using extension sets (accessories)
- Max. flow rate 5 l/min (pressure-independent)

# Shower

- Easy to clean and durable
- Surface finishes: chrome, stainless steel
- Reliable self-closing function for economical water usage
- Isolating valve, pre-filter, backflow preventer
- Full range of accessories, including shower kit, shower heads, outlet elbows
- ThermoProtect thermostat conforming to EN 1111, for temperature setting with degree precision, anti-scalding protection provided even if cold water line fails
- LINUS shower panels: Robust aluminium body with high-quality anodised surface
- LINUS Inox shower panels: made from high-quality stainless steel (1.4404) with a brushed finish
- Pivoting front on shower panels for easy installation and maintenance



**Concealed shower fitting  
LINUS D-C-T**

- Splash-proof CVD-Touch electronics
- With ThermoProtect thermostat
- Hot water stop at 38 °C
- Stagnation flush
- Thermal disinfection
- SWS-ready
- SSC (Bluetooth®)-ready



**Concealed shower fitting  
LINUS Basic D-C-T**

- Designed for the toughest of working environments
- Splash-proof CVD-Touch electronics
- With ThermoProtect thermostat
- Hot water stop at 38 °C
- Stagnation flush
- Thermal disinfection
- SWS-ready
- SSC (Bluetooth®)-ready



**Concealed shower fitting  
LINUS D-SC-T**

- With ThermoProtect thermostat
- Hot water stop at 38 °C
- Thermal disinfection



**Concealed shower fitting  
LINUS Basic D-SC-T**

- Designed for the toughest of working environments
- With ThermoProtect thermostat
- Hot water stop at 38 °C
- Thermal disinfection



**Concealed shower fitting  
LINUS D-C-M**

- Splash-proof CVD-Touch electronics
- For mixed water
- Stagnation flush
- Battery operation
- SWS-ready
- SSC (Bluetooth®)-ready



**Concealed shower fitting  
LINUS D-SC-M, D-SC-V**

- For mixed water, pre-mixed water or cold water



**Exposed shower fitting  
VITUS VD-C-T**

- With ThermoProtect thermostat
- Optional thermal disinfection function
- Stagnation flush
- Splash-proof CVD-Touch electronics
- SWS-ready
- SSC (Bluetooth®)-ready



**Exposed shower fitting  
VITUS VD-SC-M**

- For mixed water
- Optional thermal disinfection function



Now also available as a set with shower set

**Exposed shower fitting  
MODUS MD-T**

- Mit ThermoProtect-Thermostat
- IsoBody technology for effective protection against burns thanks to stay-cool housing



**Shower panel  
LINUS DP-C-T**

- With ThermoProtect thermostat
- Stagnation flush
- Optional thermal disinfection function
- Splash-proof CVD-Touch electronics
- SWS-ready
- SSC (Bluetooth®)-ready



**Shower panel  
LINUS DP-SC-M**

- For mixed water



**Shower panel  
LINUS Inox DP-C-T**

- Stagnation flush
- Optional thermal disinfection function
- Splash-proof CVD-Touch electronics
- SWS-ready
- SSC (Bluetooth®)-ready



**Shower panel  
LINUS Inox DP-C-T-D-H**

- Splash-proof CVD-Touch electronics
- Outlet via shower head or hand shower, adjustable
- Stagnation flush
- Adjustment option via manual programming
- SWS-ready
- SSC (Bluetooth®)-ready



**Exposed shower head  
COMFORT Flex**

- Vandal-resistant shower head, with soft stream and anti-limescale burls
- Adjustable tilt angle 12 – 32°



# WC

- Robust concealed flush valve with reliable cartridge design
- Operating panel in plastic or metal
- Surface finishes: chrome, alpine white, stainless steel
- WC cistern in the module
- Designs for drywall and masonry installation



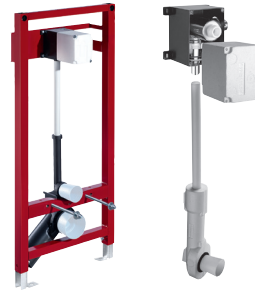
**WC operating panels**  
**EDITION / EDITION Eco 100**

- Operating panel with pushbuttons for single flush/ dual flush
- Also available in a design for shallow installation depths (EDITION Eco 100)



**WC control**  
**EDITION E / EDITION Manual**

- Contact-free triggering using infrared sensors
- Mains or battery operation
- Manual actuation for EDITION E Manual
- SWS-ready
- SSC (Bluetooth®)-ready



**WC module MONTUS /**  
**Concealed WC flush valve**  
**COMPACT II**

- For wall-mounted WCs with a COMPACT II concealed WC flush valve
- Flush triggered by the EDITION operating panels



**Cistern WC operating panel**  
**MONTUS FIELD E**

- Contact-free dual flush
- Manual actuation possible in the event of power failure
- Front panel: die-cast zinc
- Finish: chrome



**Cistern WC operating panel**  
**MONTUS TOWER**

- Dual flush
- Front panel: ABS
- Finishes: chrome, matt chrome, white



**Cistern WC operating panel**  
**MONTUS KONKAV**

- Dual flush
- Front panel: ABS
- Finishes: chrome, matt chrome, white, black



*Now also available with stagnation flush*

**WC module**  
**MONTUS**

- For all SCHELL cistern operating panels
- Stagnation flush controlled via SWS or SSC (MONTUS Flow WC module)
- Also available as a barrier-free module (MONTUS Flow H)



**Exposed WC flush valve**  
**SCHELLOMAT Silent Eco**

- Brass push buttons for dual flush
- Demand-based usage saves water



**Exposed WC flush valve**  
**SCHELLOMAT Basic**

- Brass push button for single flush



**Exposed WC flush valve**  
**SCHELLOMAT**

- Solid brass lever for single flush volume



**Hand showers**  
**Bidets Premium Set / Trend Set**





- With holder and connection hose
- Hose with anti-twist protection
- Hand shower made from chrome-plated brass or plastic

# Urinal

- Robust concealed flush valve
  - Reliable self-closing cartridge design or electronic solenoid valve
- One roughing-in set for all applications
  - Operating panels in plastic or metal
  - Finishes: chrome, alpine white, stainless steel

				
<b>Urinal control EDITION E</b>		<b>Urinal module MONTUS/ Concealed urinal flush valve COMPACT II</b>	<b>Exposed urinal flush valve SCHELLTRONIC</b>	<b>Exposed urinal flush valve SCHELLOMAT Basic</b>
<ul style="list-style-type: none"> <li>• Contact-free infrared urinal control system</li> <li>• With 24 h hygiene flush</li> <li>• Front panel: plastic or stainless steel</li> <li>• Finishes: chrome, alpine white, stainless steel</li> <li>• SWS-ready</li> <li>• SSC (Bluetooth®)-ready</li> </ul>		<ul style="list-style-type: none"> <li>• Module for stud partition/ exposed installation</li> <li>• Low-noise concealed urinal flush valve</li> </ul>	<ul style="list-style-type: none"> <li>• Contact-free for improved convenience and hygiene</li> <li>• Flush time: adjustable from 1 to 15 seconds</li> <li>• Stagnation flush every 24 hours</li> <li>• With service isolating valve</li> <li>• SSC (Bluetooth®)-ready</li> </ul>	<ul style="list-style-type: none"> <li>• Plastic cartridge for high operational reliability</li> <li>• Brass push button</li> <li>• Adjustable flush volume, 1–6 l</li> </ul>
			<ul style="list-style-type: none"> <li>• Invisible urinal control system</li> <li>• Vandal-proof installation behind the sanitary ceramics or in other areas out of the sight of users</li> <li>• Economical water consumption with a stadium program</li> <li>• Flush stop if waste pipe is blocked</li> <li>• Stagnatioin flush</li> </ul>	
<b>Urinal control COMPACT LC</b>		<b>Urinal control RETROFIT LC</b>		
<ul style="list-style-type: none"> <li>• Universal siphon flush control</li> <li>• Corrosion-resistant sensor for accurate user detection</li> <li>• Vandal-proof installation</li> <li>• Suitable for all urinals – even stainless steel</li> </ul>		<ul style="list-style-type: none"> <li>• Suitable for retrofitting</li> <li>• Universal siphon flush control</li> <li>• Corrosion-resistant sensor for accurate user detection</li> <li>• Vandal-proof installation</li> </ul>		

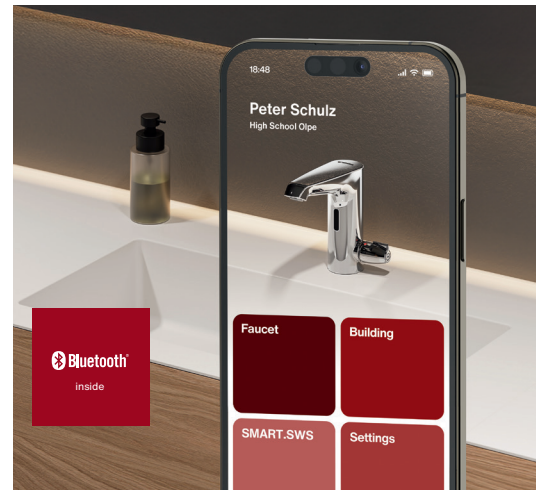
# Angle valves and Appliance connection fittings

			
<b>Angle valve with regulating function COMFORT</b>	<b>Angle valve with regulating function COMFORT and filter</b>	<b>Sampling angle valve / Sampling valve PROBFIX</b>	<b>Angle valve thermostat</b>
<ul style="list-style-type: none"> <li>• DIN angle valve with regulating function and COMFORT handle</li> <li>• Fast assembly with a self-sealing connection thread (ASAG easy)</li> <li>• Easy to actuate</li> <li>• Noise class I, also in throttled position</li> </ul>	<ul style="list-style-type: none"> <li>• DIN angle valve with regulating function and COMFORT handle</li> <li>• Filter: mesh gauge 250 µm</li> <li>• Fast assembly with a self-sealing connection thread (ASAG easy)</li> <li>• Easy to actuate</li> <li>• Noise class I, also in throttled position</li> </ul>	<ul style="list-style-type: none"> <li>• Valves for drawing off drinking water samples (DIN ISO 19458)</li> </ul>	<ul style="list-style-type: none"> <li>• Max. draw-off temperature limit with degree precision on wash basin taps</li> <li>• Reliable anti-scalding protection, even if the cold water line fails</li> <li>• Thermal disinfection option</li> </ul>

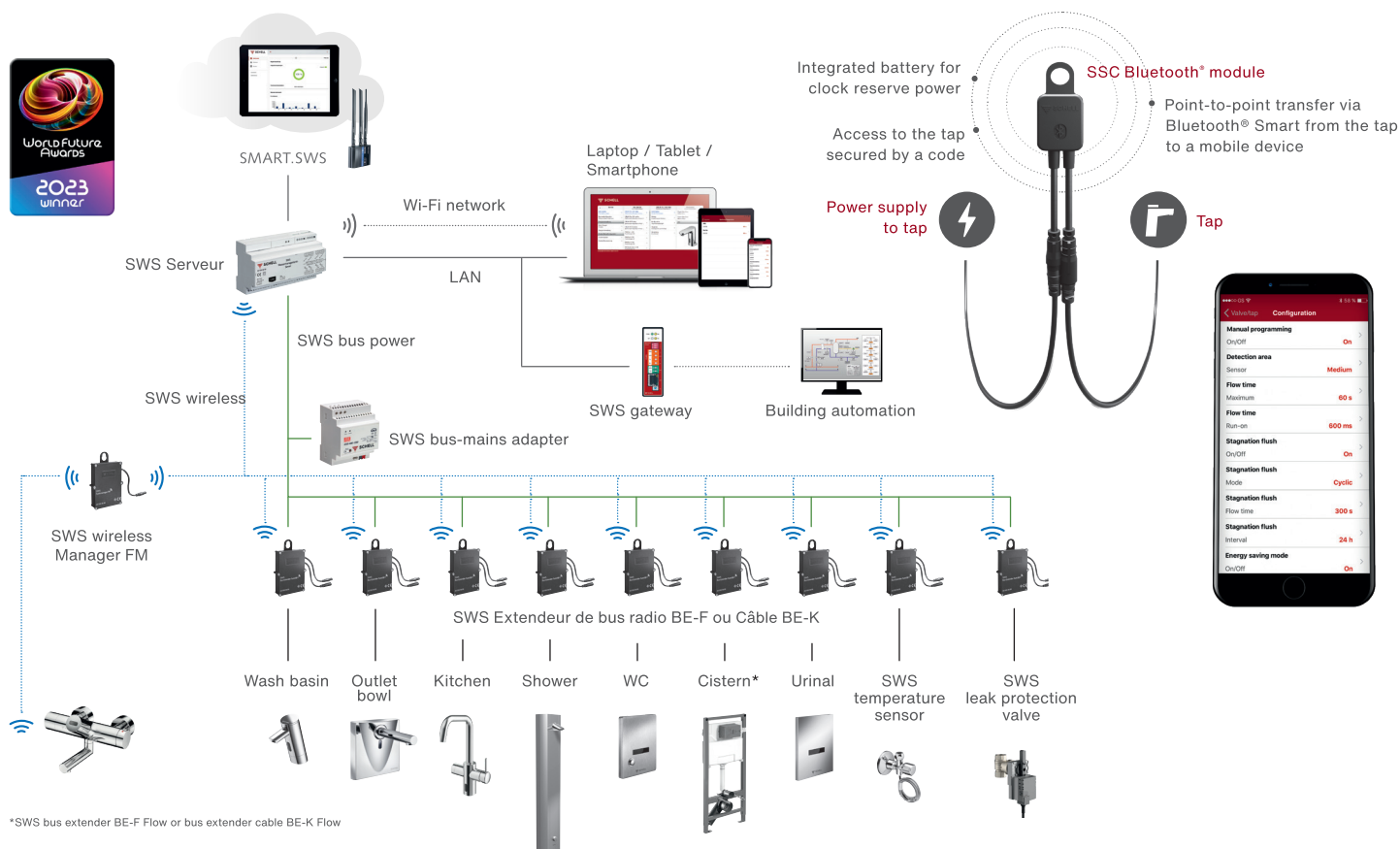
# E<sup>2</sup> – Simply connected

The new generation of faucets with innovative technology, Bluetooth® inside and direct control via app

- Bluetooth® inside: direct connection between faucet and app
- Lightning-fast commissioning and parameter setting
- New ToF (Time of Flight) sensor for highly accurate triggering
- At-a-glance details of faucet status and any action needed
- Easy to use documentation and broad-based data reporting
- Smart demand-based flushing: Stagnation flushes are recalculated and executed daily, after allowing for usage levels



## SCHELL Water Management System SWS / SMART.SWS



SCHELL SWS is the first water management system able to offer wired and wireless control of all fittings in public sanitary facilities.

### Your advantages

- Safe: centrally controlled hygiene flush and thermal disinfection
- Efficient: targeted control of water quantities, optimised energy consumption with central building control system integration
- User-friendly: intuitive operation via industry-standard Windows PCs, tablets and smartphones

- Versatile: functions for analysis and complete documentation, room layout creation, group creation and much more
- Intelligent: centralised control via water management server and mesh wireless network
- Practical: simplicity ensured by few components

### SMART.SWS

#### Worldwide access to professional water management

The innovative SMART.SWS add-on gives users lightning-fast access to monitoring, control and logging for all of the SWS systems in their properties.

**SHELL GmbH & Co. KG**

Raiffeisenstraße 31  
57462 Olpe  
Germany  
Tel. +49 2761 892-0  
Fax +49 2761 892-199  
[info@schell.eu](mailto:info@schell.eu)  
[www.schell.eu](http://www.schell.eu)

**Customer Support:**

[customer.service@schell.eu](mailto:customer.service@schell.eu)  
Tél. +49 2761 892-340