

Article number: 03 073 00 99

Concealed WC cistern MONTUS Type C 120 n

WC module with concealed cistern 12 cm without frame. For expansion, installation and conversion work in masonry. Saves water with dual flush and delayed filling process (saves about 0.5 l/flush).



Scope of delivery

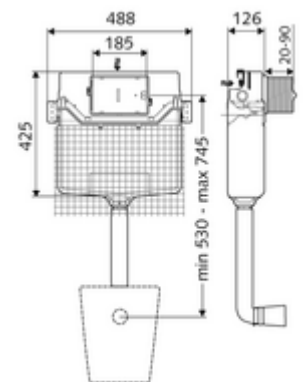
- Concealed WC cistern 12 cm, actuation from front
 - Angle valve with regulating function, G 1/2 AG, noise class I
- Plaster base mat

Technical data

- Dual flush: Eco flush volume 3 l, Main flush volume 4/5/6/7 l adjustable (6 l factory setting)
- Flush pipe connection: Ø 45 mm
- Water connection: DN 15 R 1/2 AG (top)
- Dimensions: W 48.8 cm x h 42.5 cm
- Certificates: Belgaqua

Delivery data

- Weight: 3,76 kg/Piece
- Packing unit: 1



Necessary associated articles

WC sound-insulation mat

Article no: 03 001 00 99

For mechanical actuation

WC operating panel MONTUS CIRCUM

Article no: 03 119 64 99

or

WC operating panel MONTUS CIRCUM

Article no: 03 119 06 99

or

WC operating panel MONTUS CIRCUM

Article no: 03 119 15 99

or

WC operating panel MONTUS BOARD

Article no: 03 120 06 99

or

WC operating panel MONTUS BOARD

Article no: 03 120 64 99

or

WC operating panel MONTUS BOARD

Article no: 03 120 15 99

or

WC operating panel MONTUS TOWER

Article no: 03 121 06 99

or

WC operating panel MONTUS TOWER

Article no: 03 121 64 99

or

WC operating panel MONTUS TOWER

Article no: 03 121 15 99

or

WC operating panel MONTUS KONKAV

Article no: 03 122 64 99

or

WC operating panel MONTUS KONKAV

Article no: 03 122 06 99

or

WC operating panel MONTUS KONKAV

Article no: 03 122 15 99

or

WC operating panel MONTUS PLACE

Article no: 03 070 28 99

or

WC operating panel MONTUS FIELD

Article no: 03 126 06 99

or

WC operating panel MONTUS FIELD

Article no: 03 126 64 99

or

For electronic actuation

Electronic conversion kit MONTUS

Article no: 03 127 00 99

WC operating panel MONTUS FIELD E

Article no: 03 123 06 99

or

WC operating panel MONTUS FIELD H

Article no: 03 124 06 99

or