

Article number: 03 060 00 99

WC module MONTUS

Typ 820 C, Betätigung von oben oder vorne

WC module, height 82 cm with concealed cistern 15 cm. For stud wall or pre-wall mounting or exposed installation. For wall-mounted WC with 180 or 230 mm fastening dimension. Self-supporting, powder-coated steel profiled frame with height-adjustable feet. Saves water with dual flush and delayed filling process (saves about 0.5 l/flush).



Scope of delivery

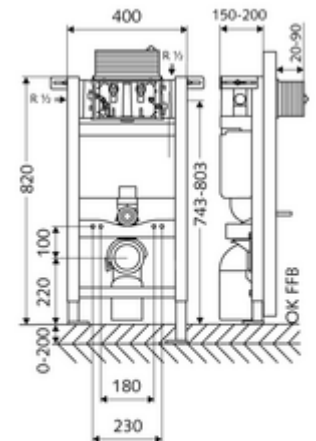
- WC module
 - Height-adjustable installation feet 0-20 cm
 - Angle valve with regulating function, G 1/2 AG, noise class I
 - WC concealed cistern 15 cm, actuation from top or front
- Fastening material for WC installation (fastening bolts M 12 x 200 mm, protection hoses, plastic collar bushings, nuts, flat washers, cover caps)
- Fastening material for installation feet

Technical data

- Dual flush: Eco flush volume 3 l, Main flush volume 4/5/6/7 l adjustable (6 l factory setting)
- Load capacity: max. 400 kg
- Waste water connection: Ø 90 /110 mm
- Flush pipe connection: Ø 45 mm
- Water connection: DN 15 R 1/2 AG (rear, top, sides)
- Waste water outlet: Ø 90 /110 mm
- Material: Frame Steel
- Surface: Frame Powder coat finish
- Dimensions: W 40 cm x h 82 cm
- Certificates: Belgaqua

Delivery data

- Weight: 11,60 kg/Piece
- Packing unit: 1



Necessary associated articles

WC sound-insulation mat	Article no: 03 001 00 99	
<u>For mechanical actuation</u>		
WC operating panel MONTUS CIRCUM	Article no: 03 119 06 99	or
WC operating panel MONTUS CIRCUM	Article no: 03 119 64 99	or
WC operating panel MONTUS CIRCUM	Article no: 03 119 15 99	or
WC operating panel MONTUS BOARD	Article no: 03 120 64 99	or
WC operating panel MONTUS BOARD	Article no: 03 120 06 99	or
WC operating panel MONTUS BOARD	Article no: 03 120 15 99	or
WC operating panel MONTUS TOWER	Article no: 03 121 64 99	or
WC operating panel MONTUS TOWER	Article no: 03 121 06 99	or
WC operating panel MONTUS TOWER	Article no: 03 121 15 99	or
WC operating panel MONTUS KONKAV	Article no: 03 122 06 99	or
WC operating panel MONTUS KONKAV	Article no: 03 122 64 99	or
WC operating panel MONTUS KONKAV	Article no: 03 122 15 99	or

WC operating panel MONTUS PLACE	Article no: 03 070 28 99	or
WC operating panel MONTUS FIELD	Article no: 03 126 06 99	or
WC operating panel MONTUS FIELD	Article no: 03 126 64 99	or