

Article number: 03 058 00 99

WC module MONTUS Type C-N 120

WC module with concealed cistern 12 cm. For expansion, installation and conversion work in masonry. For wall-mounted WC with 180 or 230 mm fastening dimension. U-shaped, non-self-supporting, galvanised steel frame. Saves water with dual flush and delayed filling process (saves about 0.5 l/flush).

Scope of delivery

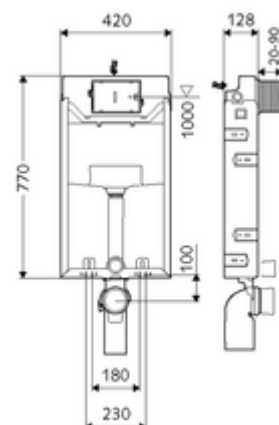
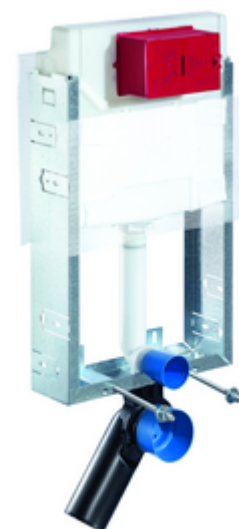
- WC module
 - WC concealed cistern 12 cm, actuation from front
 - Angle valve with regulating function, G 1/2 AG, noise class I
- Fastening material for WC installation (fastening bolts M 12 x 200 mm, protection hoses, plastic collar bushings, nuts, flat washers, cover caps)
- Plaster base mat
- Fastening material for wall installation

Technical data

- Dual flush: Eco flush volume 3 l, Main flush volume 4/5/6/7 l adjustable (6 l factory setting)
- Waste water connection: Ø 90 /110 mm
- Flush pipe connection: Ø 45 mm
- Water connection: DN 15 R 1/2 AG (rear centre)
- Waste water outlet: Ø 90 /110 mm
- Material: Frame Steel
- Surface: Frame Galvanised
- Dimensions: W 42 cm x h 77 cm
- Certificates: Belgaqua

Delivery data

- Weight: 8,64 kg/Piece
- Packing unit: 1



Necessary associated articles

WC sound-insulation mat

Article no: 03 001 00 99

For mechanical actuation

WC operating panel MONTUS CIRCUM

Article no: 03 119 06 99 or

WC operating panel MONTUS CIRCUM

Article no: 03 119 64 99 or

WC operating panel MONTUS CIRCUM

Article no: 03 119 15 99 or

WC operating panel MONTUS BOARD

Article no: 03 120 64 99 or

WC operating panel MONTUS BOARD

Article no: 03 120 06 99 or

WC operating panel MONTUS BOARD

Article no: 03 120 15 99 or

WC operating panel MONTUS TOWER

Article no: 03 121 64 99 or

WC operating panel MONTUS TOWER

Article no: 03 121 06 99 or

WC operating panel MONTUS TOWER

Article no: 03 121 15 99 or

WC operating panel MONTUS KONKAV

Article no: 03 122 06 99 or

WC operating panel MONTUS KONKAV

Article no: 03 122 64 99 or

WC operating panel MONTUS KONKAV

Article no: 03 122 15 99 or

WC operating panel MONTUS PLACE

Article no: 03 070 28 99 or

WC operating panel MONTUS FIELD

Article no: 03 126 06 99 or

WC operating panel MONTUS FIELD <u>For electronic actuation</u>	Article no: 03 126 64 99	or
Electronic conversion kit MONTUS	Article no: 03 127 00 99	
WC operating panel MONTUS FIELD E	Article no: 03 123 06 99	or
WC operating panel MONTUS FIELD H	Article no: 03 124 06 99	or